

The logo consists of the letters 'S3' in a bold, blue, sans-serif font. A thin white line extends from the top of the 'S' and curves around a small white circle to the left.

S3

The logo features the word 'sagitec' in a lowercase, sans-serif font. The 'sagi' is in black, and 'tec' is in orange. A thin orange swoosh underline is positioned beneath the 'tec' portion.

sagitec

The background image shows a close-up of a person's hand typing on a laptop keyboard. The scene is bathed in a warm, golden light, creating a soft glow. In the foreground, there are faint, abstract geometric shapes and lines, including a network of white dots connected by thin lines on the left side.

Sagitec Accelerators

Sagitec Software Studio (S3)

Many state and local government agencies choose to implement line-of-business (LOB) software packages to modernize their operations, achieve operational efficiency, and engage constituents. Like organization-wide enterprise resource planning (ERP) packages, LOB software contains a large number of integrated technical and functional capabilities. More often than not, LOB software requires customization to integrate with other systems, implement unique and complex policies and achieve strategic goals.

Over time, this customization combined with layers of upgrades and enhancements can make the LOB software difficult and expensive to maintain and support. Data suggests that some state and local agencies spend as much as 10% of the total implementation cost every year to maintain and support their LOB solutions. Given that a substantial portion of the total cost of the LOB-system occurs in the post-implementation phase, maintenance and support (M&S) should be a significant consideration in selecting LOB software.

Sagitec's approach to LOB software is predicated on separating technology (framework) and business functionality so that each layer can evolve independently without affecting each other. This approach reduces implementation timelines, lowers cost of ownership, and speeds the pace of technology evolution.

Get the Power of Easy Software Development

Sagitec's Platform provides a framework coupled with powerful accelerators that enhance your ability to deliver or update a system quickly and efficiently. These offer significant benefits to you since they implement the application foundation services allowing the project teams to focus on "what" to do rather than "how" to do it.

Sagitec's Platform can reduce your lines of code by as much as 70% from traditional software as the Platform engines eliminate lines of code by acting as XML metadata interpreters. The engines facilitate a metadata foundation that reduces software code compared to traditional software programs. The metadata foundation makes systems agile, organic, and easy to upgrade to newer versions.

Sagitec Software Studio (S3) is a robust web accelerator tool used for creating, modifying and deploying web applications using the Sagitec Platform Services. It consistently enforces product standards by reducing errors, improving usability, moving the business logic out of programming language, and increasing your ability to migrate to new technology as it becomes available.

S3 allows you and us to be extremely productive with minimal programming. S3 has exploited the search functionality to provide developers/business analysts with a rich set of features like global search, search in files, design search, property highlighters, and search with filters.

Key Benefits and Features S3 Provides to You and Your Organization

Design and Maintain Your Web Applications

S3 lets you design member, employer, and third-party portals using hundreds of responsive, commercially available user interface templates or build your own template. You can create or modify the screens for your LOB solution and deploy the changes without any system outage. The "convention over configuration" design approach reduces the number of decisions that a developer has to make while designing screens.

Easily Define, Maintain, and Trace Complex Business Rules

S3 offers sophisticated functionality, including the ability to define rules and rules sets, test rules (with or without accessing your LOB solution), deploy (bind) rules to business entities, and analyze rules.

S3 provides an easy to access version-controlled rules repository, preserving business logic so that it is reusable. S3 allows you to deploy complex business rules in a few hours instead of weeks or months.

S3 also provides a powerful facility for business analysts to test rules (flow and expression) before rules are deployed. Test values are supplied by business analysts and stored within the tools.

Manage Communication Templates

Create and maintain communication templates, bookmarks, and conditional paragraphing using S3 and Microsoft Word. Bind communication fields to your LOB solution object model set delivery options and you are ready for deployment.

Reduce Errors and Defect Density

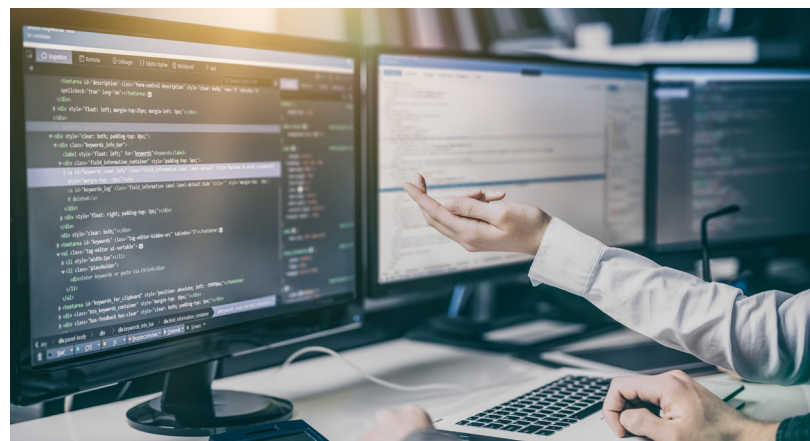
S3 generates XML and consistently enforces product standards. This reduces errors and software defects, improves usability, and increases your ability to migrate to new technology as it becomes available.

Send, Recieve, and Process Information from External Stakeholders

Map inbound and outbound interface files to your LOB solution object model and immediately start using files in your downstream processes.

Take Control of Your Business Processes

S3 lets you design, implement, and execute business processes (BPMN 2.0-compliant) with a few clicks. Bind screens, business rules, web services, and communication templates to your business process model. Then, deploy, monitor, and fine-tune your run-time processes.



Sagitec's Process Design and Development Tools

There are two main tools that help you design and test business rules in your LOB solution.

SAGITEC SOFTWARE STUDIO

A web-based application development tool that allows technical staff to design and build each state's benefit administration solution in one web-based environment. In addition to fostering the rapid development of each state's unique features (e.g., user interface designs, prototypes, workflow modeling, etc.), the Sagitec Software Studio allows Sagitec's staff to define the states' business rules using logical rules and decision tables instead of a complex programming language. Sagitec Analyst Studio™ is an XML-based rules engine that provides the ability for state-specific configuration, effective date rules and the capability to test and verify rules before they are deployed.

SAGITEC TEST STUDIO

A powerful regression testing tool is used to define and automate test cases. Test scripts are reusable and can be executed offline, which expedites and simplifies the testing process, and the intuitive repository allows staff to review testing results for quality assurance.



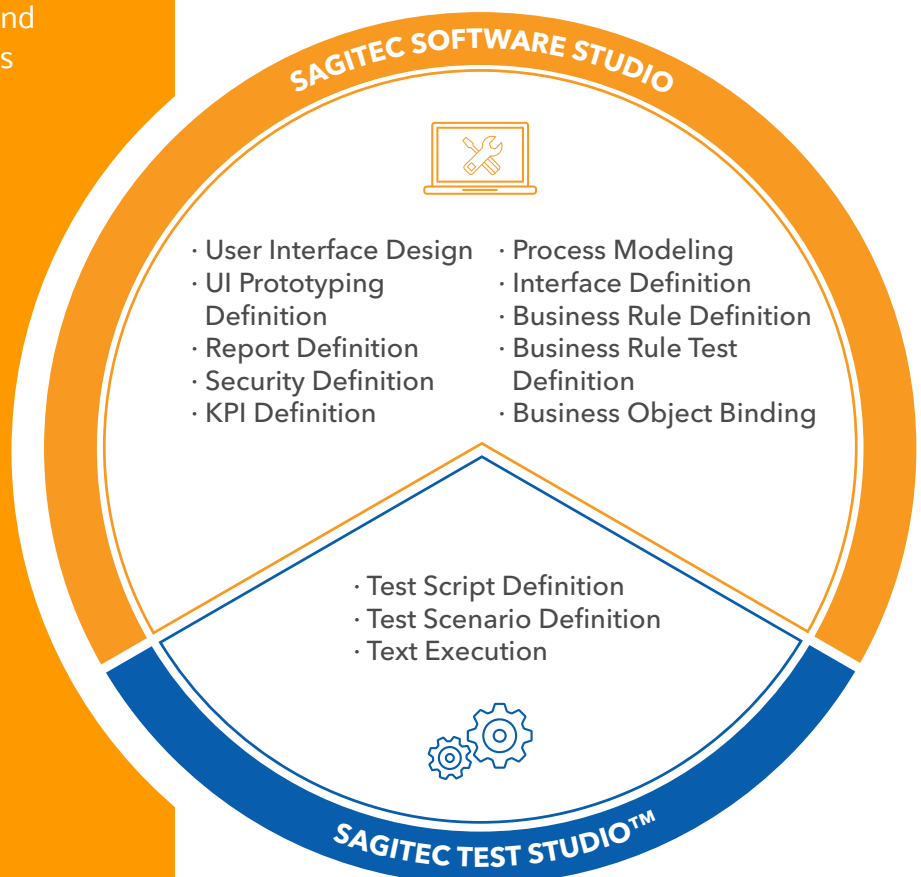
CHALLENGE

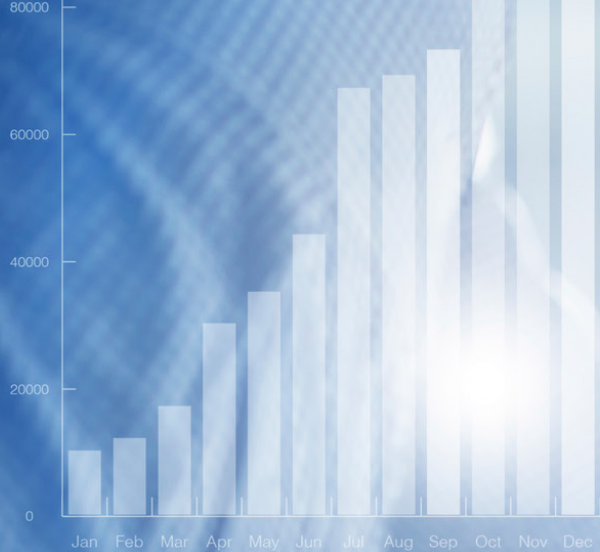
Benefit administration is complex. Thousands of business rules and decisions are made every day to determine tax/contribution rates, validate transactions, compute benefits, process claims, and manage exceptions. If these rules were set in stone, managing them would not be so difficult. However, business rules are always in flux, placing strains on your systems, processes, and employees.



OVERVIEW

Sagitec Software Studio (S3) is a web-based XML generator that serves as an Integrated Development Environment (IDE) for binding your benefit administration solution with Business Entities (including data) during design time. S3 lets you take advantage of one integrated system rather than switching between multiple tools for system design. The IDE provides comprehensive facilities for modeling business entities and defining business rules (e.g. logical rules, decision tables, excel rules) associated with these entities and scenarios for verifying the accuracy of the rules.





About Sagitec

Sagitec Solutions, LLC, is a global software provider focused on solving complex, business-rule driven problems with domain experts and proven technology. Sagitec designs and delivers complex benefits administration software for pension, labor and employment, paid family medical leave, disability insurance, and healthcare industries for clients of all sizes. Understanding that a dynamic world requires dynamic technology, Sagitec offers solutions that are highly configurable, rule-driven, and extensible by nature. With deep industry experience in software implementation and systems integration, project management, knowledge management, predictive analytics, chatbots, cloud services, consulting, hosting and software support, Sagitec is a partner clients can trust to drive their vision into action. For more information, visit: www.sagitec.com.



422 County Road D East | Saint Paul, MN 55117
612-284-7130 | info@sagitec.com | www.sagitec.com

©2018 Sagitec Solutions. All rights reserved. 8/19